

# Little Sweetheart

BY LAUNDRY BASKET QUILTS



## Dear One

Quilt Design: **Edyta Sitar**

Quilt Size: **45 1/4" x 55 3/4"**

**[andoverfabrics.com](http://andoverfabrics.com)**

andover • [makower.uk](http://makower.uk)

Free Pattern Download Available

1384 Broadway New York, NY 10018

Tel. (800) 223-5678 • [andoverfabrics.com](http://andoverfabrics.com)

# Dear One



Featuring Andover Fabrics new Collection: Little Sweetheart by Laundry Basket Quilts

Quilt designed by Edyta Sitar

Quilt finished 45 1/4" x 55 3/4"

## Cutting Directions

**Note: Read assembly directions before cutting patches.** Borders are cut to exact length required plus 1/4" seam allowance. WOF designates the width of fabric from selvedge to selvedge (approximately 42" wide).

**Fabric A** Select (4) Light squares for block centers:  
Refer to Diagram 1 to cut (5)  
2" x 5" strips and (10) 2" squares.

Cutting  
Lights

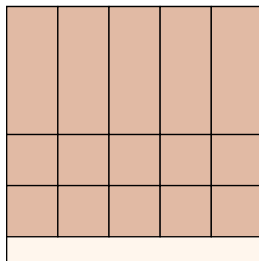


Diagram 1

Select (2) of each stripe print for two blocks:

Refer to Figure 2 to turn the squares on point and cut (2) 2" x 5" strips, (6) 2" x 3 1/2" strips and (2) 2" squares. (*You will need 2 squares of each print to get all the pieces when cutting on point*)

Cutting  
Stripe Prints  
only

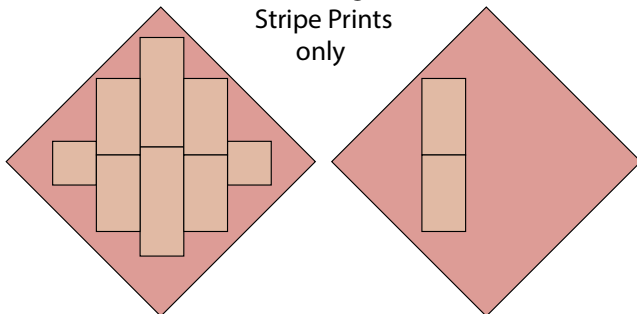


Diagram 2

## Fabric Requirements

	Yardage	Fabric
<b>Blocks</b> Little Sweetheart Layer Cake	1 package	3S-Sweetheart-X
<b>Background</b>	2 yards	8815-L1
<b>Binding</b>	1/2 yard	8835-R
<b>Backing</b>	3 yards	8822-E

Select (18) 10" squares from the remaining medium and dark colors:

Refer to Figure 3 to cut (2) 2" x 5" strips,  
(6) 2" x 3 1/2" strips and (2) 2" squares.

Cutting  
Mediums & Darks  
(except Stripes)

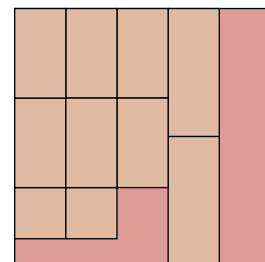


Diagram 3

## Fabric B

Cut (5) 3 1/2" x WOF strips. Sub-cut (60) 3 1/2" squares. Cut each square across both diagonals to make (240) side triangles. Cut (2) 2" x WOF strips. Sub-cut (40) 2" squares. Cut each square across one diagonal to make (80) corner triangles. Cut (7) 2 3/4" x WOF strips. Sub-cut (25) 2 3/4" x 9" strips. Cut (7) 2 3/4" x WOF strips. Sew the strips together end to end with a diagonal seam and cut (6) 2 3/4" x 45 3/4" strips.

## Binding

Cut (6) 2 1/2" x WOF strips for the binding.

## Backing

Cut (2) 54" x WOF strips. Sew the strips together and trim to make (1) 54" x 64" back.

## Making the Quilt

### 1. Block Assembly

**(Follow Figure 4 while assembling blocks):**

Use the same print for the dark and the light in each block as shown on quilt photo.

Sew (1) Fabric B side triangle to each side of (1) 2" Dark Fabric A square to make Row 1. Repeat to make Row 7.

2. Sew (1) Fabric B side triangle to each side of (1) 2" x 5" Fabric A dark strip to make Row 2. Repeat to make Row 6.

3. Sew together (1) Fabric B side triangle, (1) 2" x 3 1/2" Fabric A dark strip, (1) 2" Fabric A Light square, (1) 2" x 3 1/2" Fabric A dark strip and (1) Fabric B side triangle, in this order to make Row 3. Repeat to make Row 5.

4. Sew together (1) Fabric B corner triangle, (1) 2" x 3 1/2" Fabric A dark strip, (1) 2" x 5" Fabric A Light strip, (1) 2" x 3 1/2" Fabric A dark strip and (1) Fabric B corner triangle to make Row 4.

5. Sew the rows together in numeric order to make the block center.

6. Sew (1) Fabric B corner triangle to the top and bottom of the block center to complete (1) Block One square.

7. Repeat Steps 1-6 to make (20) Block One squares total from the assorted lights, mediums and darks.

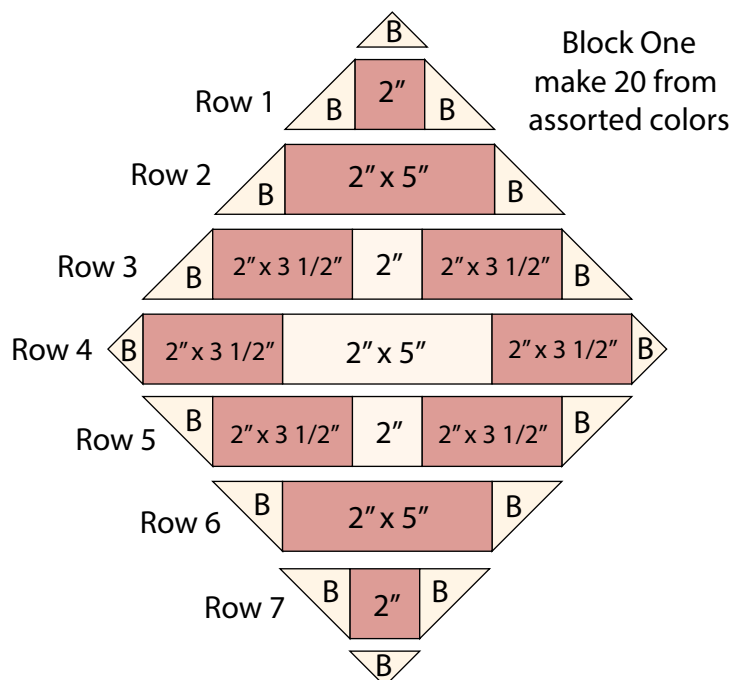


Diagram 4

## Quilt Top Assembly

*(Refer to the Quilt Layout when assembling the quilt top.)*

8. Sew together (5) 2 3/4" x 9" Fabric B strips and (4) Block One squares, alternating them, to make (1) Block Row. Repeat to make (5) Block Rows total.

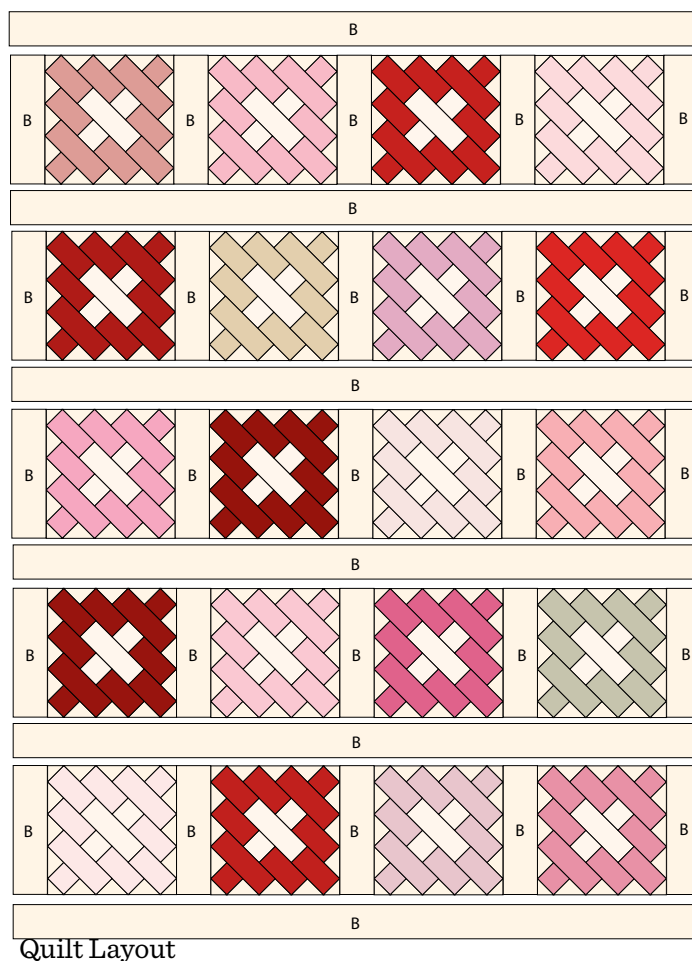
9. Sew together (6) 2 3/4" x 45 3/4" Fabric B strips and (5) Block Rows, alternating them to make the quilt top.

## Finishing the Quilt

10. Layer and quilt as desired.

11. Sew the (6) binding strips together, end to end with a 45-degree seams, to make the binding. Fold this long strip in half lengthwise with wrong sides together and press.

12. Bind as desired.



Quilt Layout



# Little Sweetheart

BY LAUNDRY BASKET QUILTS



8511-E



8511-R



8515-L1



8522-E



8522-L



8522-R



8523-R



8524-E



8524-L1



8524-R



8526-E



8526-L1



8527-E



8528-L



8528-R



8529-E



8531-E



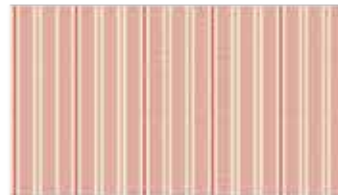
8531-R



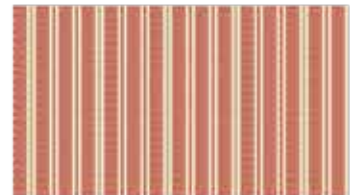
8533-R



8534-L1



8535-E



8535-R

## About Our Fabrics

A recognized leader in the quilting industry, Andover Fabrics features designs by a wide variety of talented artists and licenses, including Downton Abbey and Eric Carle's Very Hungry Caterpillar. Catering to the tastes of creative and dedicated quilters, Andover has a style for everyone — authentic reproductions, romantic florals, modern and more.

Fabrics shown are 25% of actual size.

andover • [makower.uk](http://makower.uk)

Free Pattern Download Available

1384 Broadway New York, NY 10018  
Tel. (800) 223-5678 • [andoverfabrics.com](http://andoverfabrics.com)